



TORNGAT
**WILDLIFE
PLANTS &
FISHERIES**
SECRETARIAT

Fisheries Workshop Evaluation 2013

Park, D., Dale, A., and J. Snook

Torngat Wildlife, Plants and Fisheries Secretariat,
217 Hamilton River Rd., P.O. Box 2050 Stn. B
Happy Valley-Goose Bay, NL A0P 1E0

2013

Torngat Joint Fisheries Board
Torngat Wildlife, Plants & Fisheries Secretariat Series 2013/02



Torngat Wildlife, Plants and Fisheries Secretariat

The primary responsibilities of the Torngat Wildlife and Plants Co-management Board and the Torngat Joint Fisheries Board are to establish total allowable harvests for non-migratory species of wildlife and for plants, recommend conservation and management measures for wildlife, plants, and habitat in the Labrador Inuit Settlement Area (LISA) and to make recommendations in relation to the conservation of species, stocks of fish, aquatic plants, fish habitat, and the management of fisheries in the Labrador Inuit Settlement Area.

The Secretariat is the implementation agent of the Torngat Joint Fisheries Board and the Torngat Wildlife and Plants Co-Management Board. The Secretariat is a team of professionals based in Happy Valley-Goose Bay that provide financial management, logistical, project management and analytical support to both boards.

Torngat Omajunik, Piguttunik Oganniaganillu Suliangit

Suliagigumajangit Torngat Omajunik, Piguttunillu AulatsiKatigengita AngajukKauKatigengit ammalu Torngat Ikajuttiget Oganniatuligijingita AngajukKauKatigengit sakKititsigiamut pijaugunnatunik katillugit aullaigatsatagiamut nokataKattangitunik omajunik ammalu piguttunik, uKautjigiajut asikKitailigiamut ammalu aulatsigiamut omajunik, piguttunik, ammalu inigiKattajanginnik Labradorimi Inuit Satusasimajanginni Nunani (LISA) ammalu uKautjigiagutunik ilingajunik asikKitailigiamut omajunik, oganniaganik, piguttunik, oganik, ammalu aulatsigiamut oganniaganik Labradorimi Inuit Satusasimajanginni Nunani.

SuliaKattet atuliaKititsigumajut kiggatuttinganik Torngat Ikajuttiget Oganniatuligijingita AngajukKauKatigenginnik ammalu Torngat Omajuligijinginnik Piguttunillu AulatsiKattajut AngajukKauKatigenginnik, sunatuinnanik, suliatsanik aulatsigiamut ammalu ikajutsitaullutik tamâginnut angajukKauKatigenut.



Torngat Wildlife, Plants & Fisheries Secretariat Series

2013

Fisheries Workshop Analysis 2013

Park, D., Dale, A., and J. Snook

Torngat Wildlife Plants and Fisheries Secretariat
217 Hamilton River Rd., P.O. Box 2050 Station B,
Happy Valley-Goose bay, NL
A0P 1E0



Published by:
Torngat Wildlife, Plants and Fisheries Secretariat
217 Hamilton River Rd., P.O. Box 2050 Stn. B
Happy Valley-Goose bay, NL
A0P 1E0

Correct citation for this publication:
Park, D., Dale, A., and J. Snook. (2013). Fisheries Workshop Evaluation. *Torngat Wildlife, Plants and Fisheries Secretariat. Ser. 2013/02 + 12 p*



TABLE OF CONTENTS

Summary	1
Overview	1
Demographic responses	11
Conclusion	12



Summary

This year 22 people participated in the evaluation session. From the evaluation we found that areas people seem to be content with include: having group discussions, the location, the time of year (fall), facilitation, organization and presentations. Areas which seem to need improved include: communication within the fisheries, more large group discussions, and attendance. Attendees chose Goose bay as the preferred workshop location and fall as the best time of year to hold the workshop.

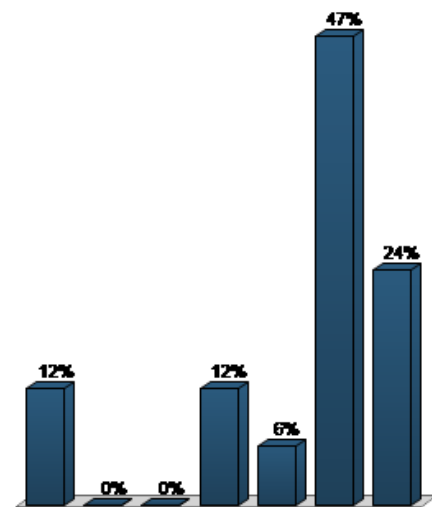
Overview

The following tables represent the 25 questions:

- Question number 6 results are incorrect due to the lack of responses.

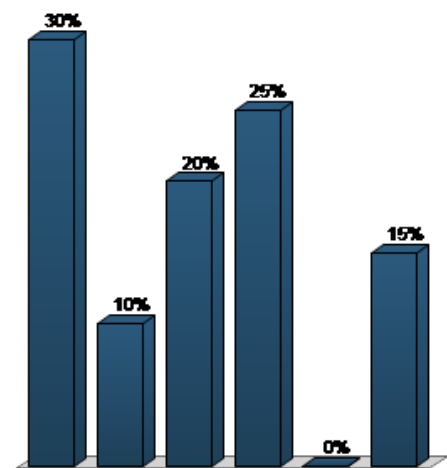
1.) What community are you from? (Demographic Assignment)

	Responses	
	Percent	Count
Nain	11.76%	2
Postville	0%	0
Hopedale	0%	0
Makkovik	11.76%	2
Rigolet	5.88%	1
HVGB	47.06%	8
other	23.53%	4
Totals	100%	17



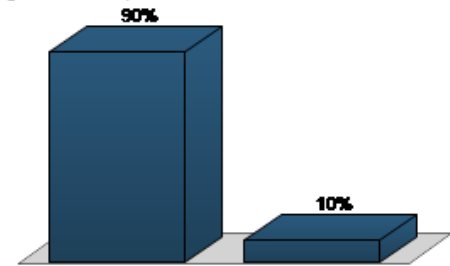
2.) Which aspect of the fisheries are you involved in? (Demographic Assignment)

	Responses	
	Percent	Count
Fishing	30%	6
Processing	10%	2
Research	20%	4
Management	25%	5
Education	0%	0
other	15%	3
Totals	100%	20



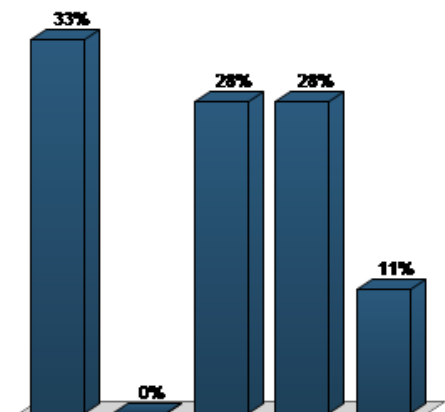
3.) Have you attended the fisheries workshop before this year? (Multiple Choice)

	Responses	
	Percent	Count
Yes	90.48%	19
No	9.52%	2
Totals	100%	21



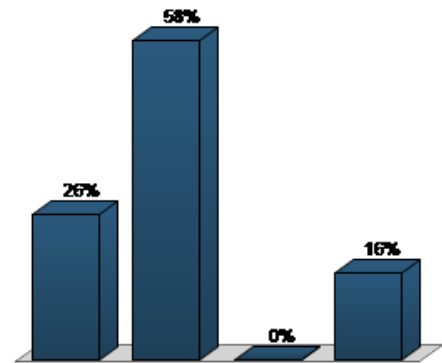
4.) What is the purpose of these workshops? (Multiple Choice)

	Responses	
	Percent	Count
To share information	33.33%	6
Plan research	0%	0
Identify issues	27.78%	5
Plan management actions	27.78%	5
Learn new skills	11.11%	2
Totals	100%	18



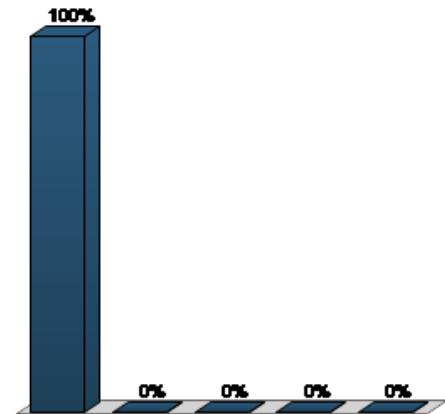
5.) Were the right people in attendance at the workshops? (Multiple Choice)

	Responses	
	Percent	Count
Yes	26.32%	5
Mostly	57.89%	11
Mostly not	0%	0
No	15.79%	3
Totals	100%	19



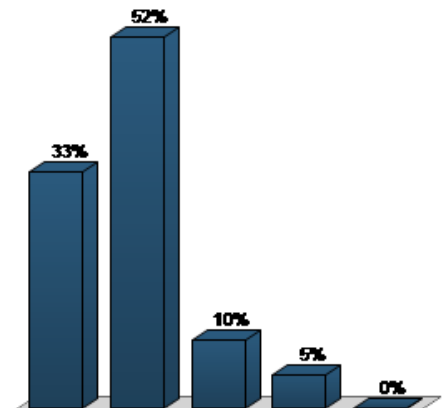
6.) I had opportunities to participate in the workshop (Multiple Choice)

	Responses	
	Percent	Count
Strongly agree	100%	3
Agree	0%	0
No opinion	0%	0
Disagree	0%	0
Strongly disagree	0%	0
Totals	100%	3



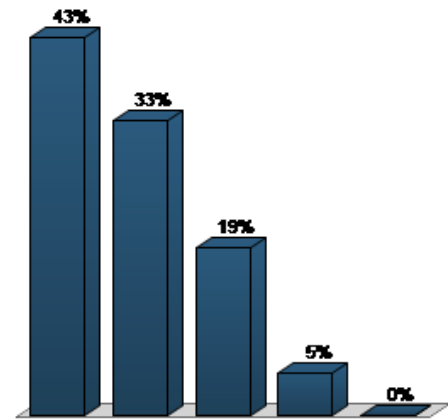
7.) I feel my participation was valued and important (Multiple Choice)

	Responses	
	Percent	Count
Strongly agree	33.33%	7
Agree	52.38%	11
No opinion	9.52%	2
Disagree	4.76%	1
Strongly disagree	0%	0
Totals	100%	21



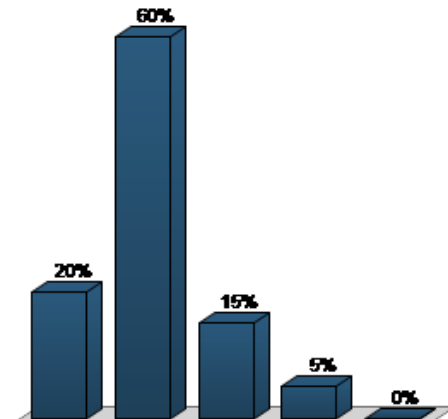
8.) Did the registration process work for you? (Multiple Choice)

	Responses	
	Percent	Count
Strongly agree	42.86%	9
Agree	33.33%	7
Neutral	19.05%	4
Disagree	4.76%	1
Strongly disagree	0%	0
Totals	100%	21



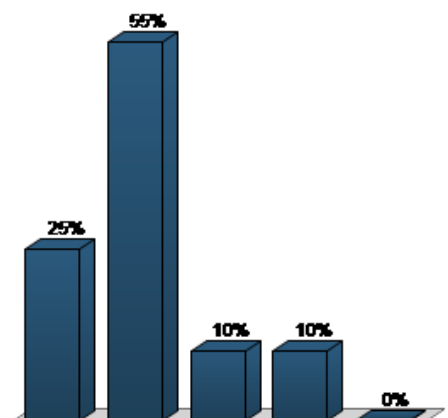
9.) The Workshop Content was Useful (Multiple Choice)

	Responses	
	Percent	Count
Strongly agree	20%	4
Agree	60%	12
Neutral	15%	3
Disagree	5%	1
Strongly disagree	0%	0
Totals	100%	20



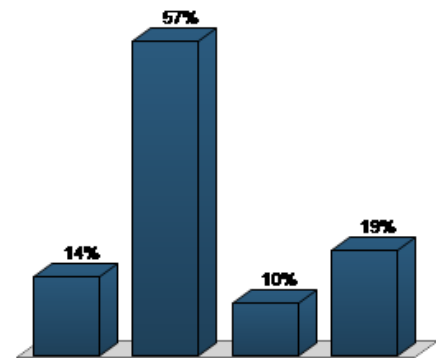
10.) The Workshop was well-organized (Multiple Choice)

	Responses	
	Percent	Count
Strongly agree	25%	5
Agree	55%	11
Neutral	10%	2
Disagree	10%	2
Strongly disagree	0%	0
Totals	100%	20



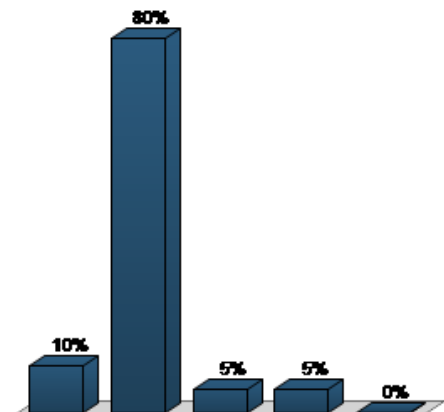
11.) Overall, how would you rate the workshop (Multiple Choice)

	Responses	
	Percent	Count
Excellent	14.29%	3
Good	57.14%	12
Okay	9.52%	2
Needs Improvement	19.05%	4
Totals	100%	21



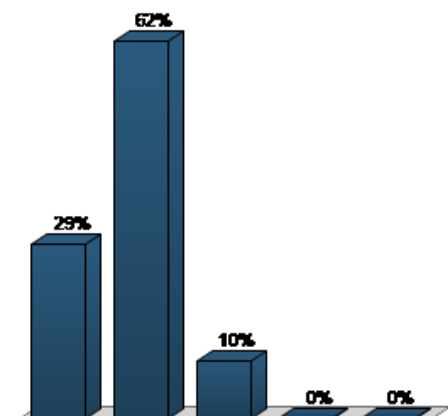
12.) The presentations were useful and informative (Multiple Choice)

	Responses	
	Percent	Count
Strongly agree	10%	2
Agree	80%	16
Neutral	5%	1
Disagree	5%	1
Strongly disagree	0%	0
Totals	100%	20



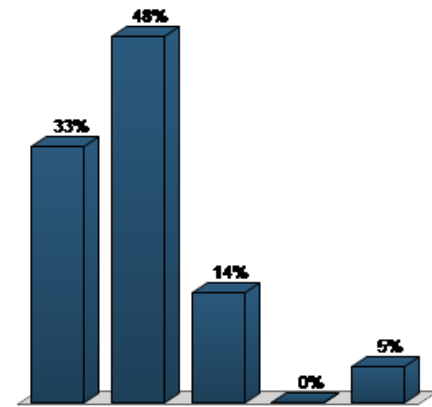
13.) The presentations were a good length of time (Multiple Choice)

	Responses	
	Percent	Count
Strongly Agree	28.57%	6
Agree	61.9%	13
Neutral	9.52%	2
Disagree	0%	0
Strongly disagree	0%	0
Totals	100%	21



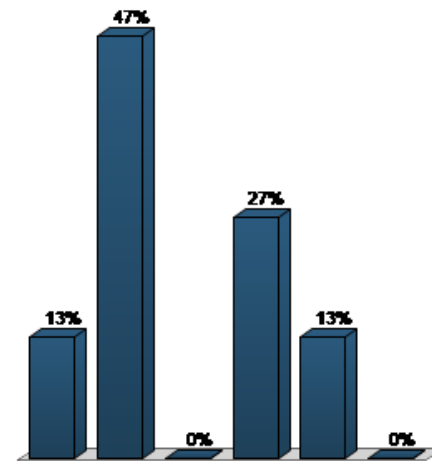
14.) The presenters were well organized and knowledgeable (Multiple Choice)

	Responses	
	Percent	Count
Strongly agree	33.33%	7
Agree	47.62%	10
Neutral	14.29%	3
Disagree	0%	0
Strongly disagree	4.76%	1
Totals	100%	21



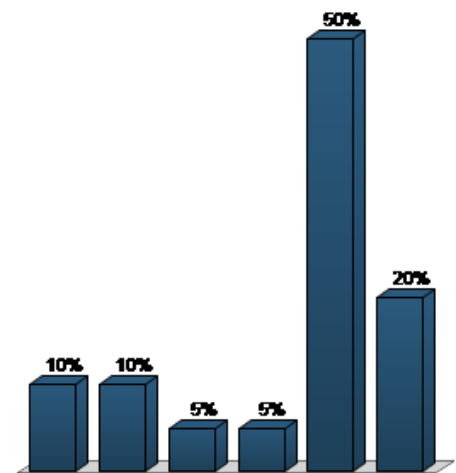
15.) How can facilitation be improved? (Multiple Choice)

	Responses	
	Percent	Count
More small group discussions	13.33%	2
More large group discussions	46.67%	7
More presentations	0%	0
Professional facilitators	26.67%	4
More presentations	13.33%	2
Other	0%	0
Totals	100%	15



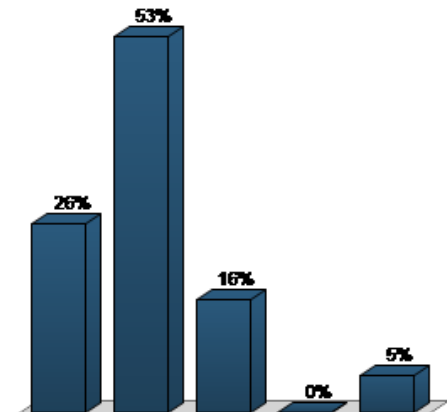
16.) In order of importance please rank from the following topics from most to least important (Priority Ranking)

	Responses	
	Percent	Weighted Count
Crab	10%	20
Shrimp	10%	20
Turbot	5%	10
Char	5%	10
All fish species	50%	100
Other	20%	40
Totals	100%	200



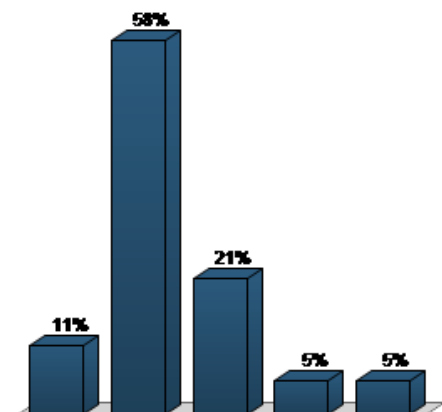
17.) Do you feel more informed after attending the workshop (Multiple Choice)

	Responses	
	Percent	Count
Strongly agree	26.32%	5
Agree	52.63%	10
Neutral	15.79%	3
Disagree	0%	0
Strongly disagree	5.26%	1
Totals	100%	19



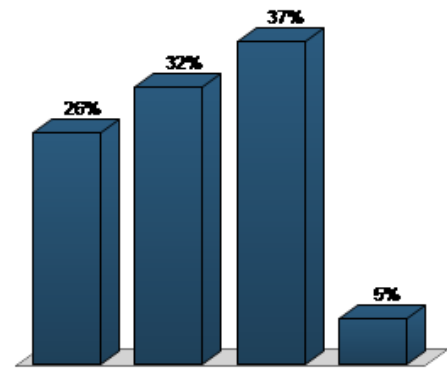
18.) Have your skills/knowledge increased as a result of this workshop (Multiple Choice)

	Responses	
	Percent	Count
Strongly agree	10.53%	2
Agree	57.89%	11
Neutral	21.05%	4
Disagree	5.26%	1
Strongly disagree	5.26%	1
Totals	100%	19



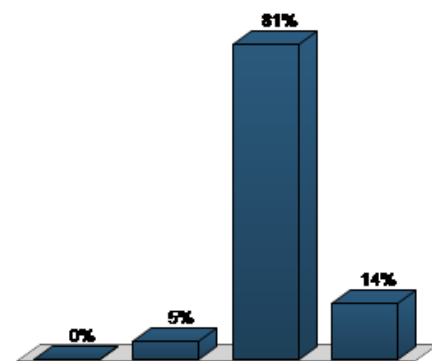
19.) Has communication within the fisheries improved since these workshops began? (Multiple Choice)

	Responses	
	Percent	Count
Yes	26.32%	5
Somewhat	31.58%	6
Not sure	36.84%	7
No	5.26%	1
Totals	100%	19



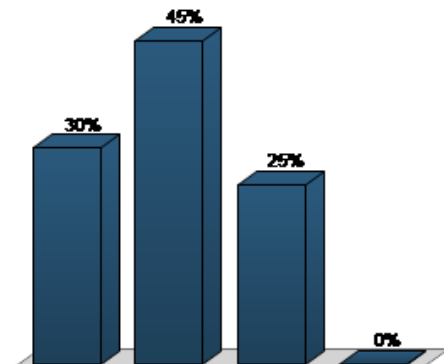
20.) When is the best season to hold the workshops? (Multiple Choice)

	Responses	
	Percent	Count
Summer	0%	0
Spring	4.76%	1
Fall	80.95%	17
Winter	14.29%	3
Totals	100%	21



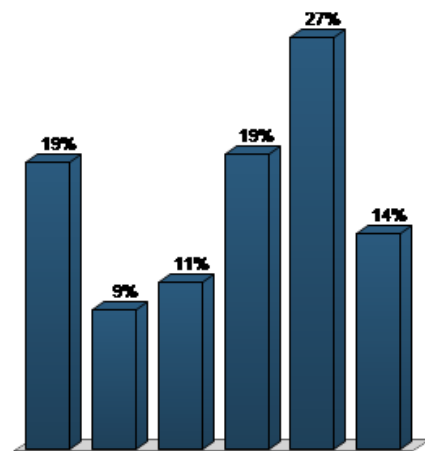
21.) How would you rate the location for this years workshop (Multiple Choice)

	Responses	
	Percent	Count
Excellent	30%	6
Good	45%	9
Neutral	25%	5
Poor	0%	0
Totals	100%	20



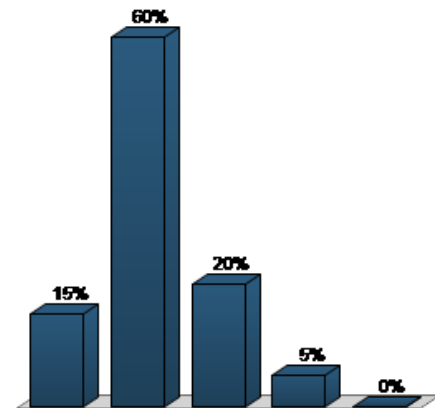
22.) Please rank the following workshop locations from most to least preferred. (Priority Ranking)

	Responses	
	Percent	Weighted Count
Makkovik	18.91%	101
Postville	9.18%	49
Rigolet	11.05%	59
Nain	19.48%	104
Happy Valley-Goose Bay	27.15%	145
Hopedale	14.23%	76
Totals	100%	534



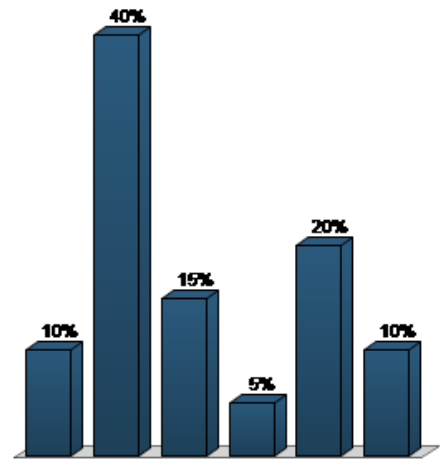
23.) My knowledge of other groups involved in the fisheries has improved as a result of this workshop (Multiple Choice)

	Responses	
	Percent	Count
Strongly agree	15%	3
Agree	60%	12
Neutral	20%	4
Disagree	5%	1
Strongly disagree	0%	0
Totals	100%	20



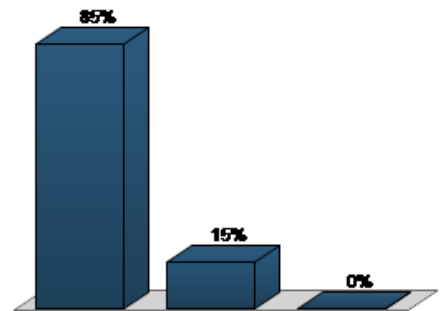
24.) How can we improve communication following the workshops? (Multiple Choice)

	Responses	
	Percent	Count
Distribute workshop minutes	10%	2
Workshop reports	40%	8
Information on our website	15%	3
Social media (facebook/twitter)	5%	1
Radio	20%	4
Other	10%	2
Totals	100%	20



25.) Would you return for future workshops (Multiple Choice)

	Responses	
	Percent	Count
Yes	85%	17
Maybe	15%	3
No	0%	0
Totals	100%	20



Demographic responses

The following demographics were broken down to determine the needs of the individual groups of people:

Fishing – Participants in this group were from Nain, Rigolet and Goose bay. 4 people stated they were in the fishing sector. Half of them felt the right people were not in attendance at the workshop. They all wanted to see more group discussions and in the future they want to see presentations on all fish species. Half the participants chose fall and the other half chose winter as the ideal workshop time. 1 person was very unsatisfied and strongly disagreed with questions #14, 17, 18, 19.

Processing – There was one participant in the processing sector, they were from Goose bay. This person was happy with the overall workshop, they answered that they would prefer a fall workshop in either Makkovik or Goose bay.

Research – In the research section there were 3 participants, 1 from Goose bay and 2 from other. Of these people the responses were generally positive, 1 person disagreed with question #12 (Presenters were well organized). They felt the workshops could be improved by professional facilitators. Makkovik and Nain were the preferred locations for the workshop and fall the best season.

Management – 5 participants were involved in the management section of the fisheries, of these 4 were from Goose bay and 1 from Makkovik. Feedback was positive, they stated crab, char and all fish species as important with respect to future workshop topics. They would like to see future workshops in Goose bay preferably in the fall.

Other – 3 participants selected 'other'. These people were from Nain, Makkovik and other. 1 of these people identified shrimp as a priority topic for future workshops. Feedback from this group was generally positive, they stated they would like to see more large group discussions, and future workshops be in the fall. Preferred locations ranged from Makkovik (25%), Nain (22%) and Goosebay (25%).

Conclusion

Overall the workshop evaluation showed positive feedback, participants stated that they would prefer that future workshops be held in Goose Bay during the fall. Areas of improvement that were identified included professional facilitators, more large group discussions and more information on all fish species. To improve communication following the workshop participants chose distribution of workshop reports, website information and radio interviews as the best methods to follow up. All participants stated they would return for other workshops in the future.